

FIG ID

STRANGLERS WITH MANY ROOTS



F. annulata

Monoecious



F. benjamina

Monoecious



F. binnendijkii

Monoecious



F. caulocarpa

Monoecious



F. crassiramea

Monoecious



F. delosyce

Monoecious



F. drupacea

Monoecious



F. forstenii

FIG ID

STRANGLERS WITH MANY ROOTS

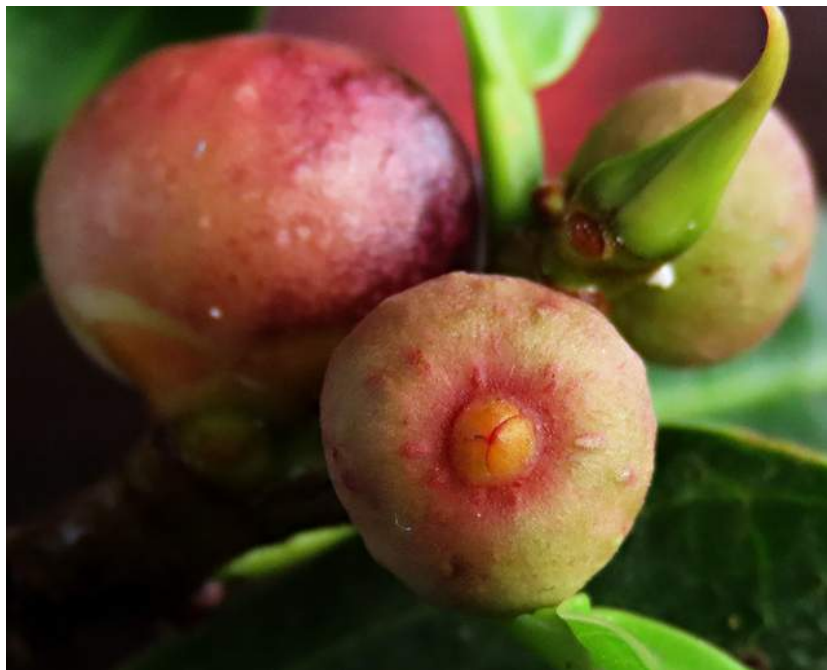


F. glandifera



F. kerkhovenii

Monoecious



F. microcarpa

Monoecious



F. parietalis



F. pellucidopunctata

Monoecious



F. pisocarpa

Monoecious



F. religiosa

Monoecious



F. stricta

Monoecious

FIG ID

STRANGLERS WITH MANY ROOTS



F. stupenda

Monoecious



F. sundaica

Monoecious



F. tinctoria



F. virens

Monoecious

FIG ID

STRANGLERS WITH ONE TRUNK



F. callophylla

Monoecious



F. cucurbitina

Monoecious



F. dubia

Monoecious



F. subcordata

Monoecious



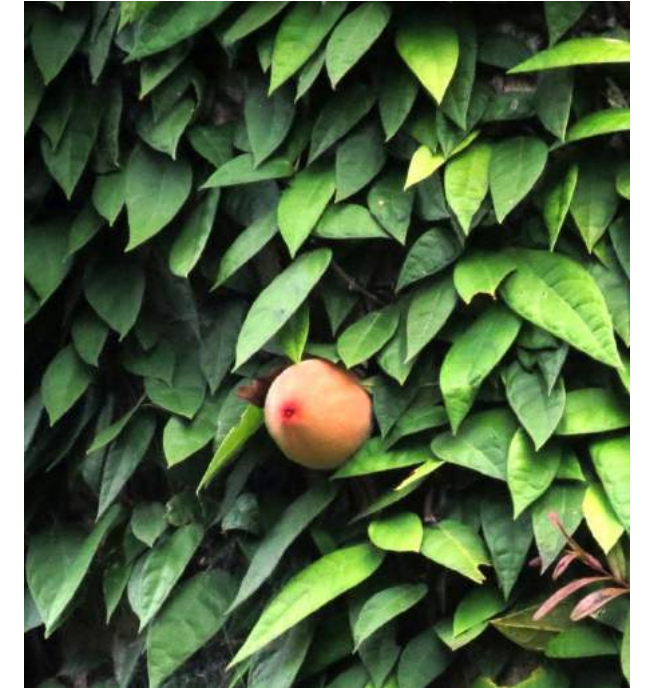
F. subgeldereri

FIG ID

ROOT CLIMBERS



F. allutacea



F. barba-jovis



F. punctata



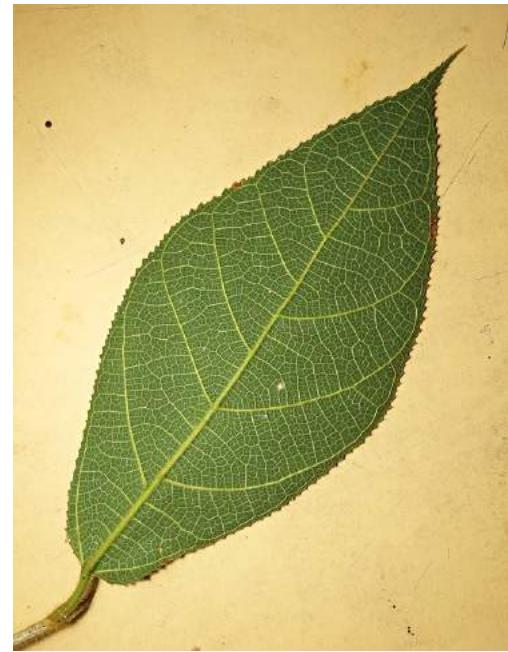
F. recurva



F. villosa

FIG ID

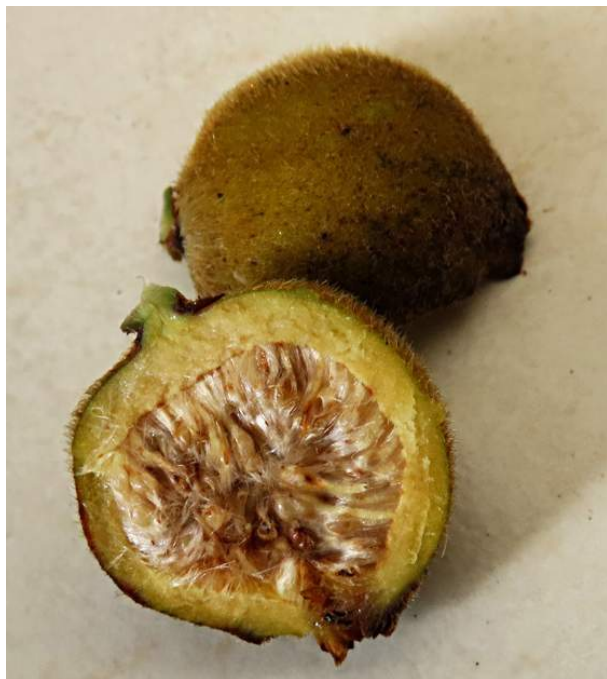
SHORT TREES



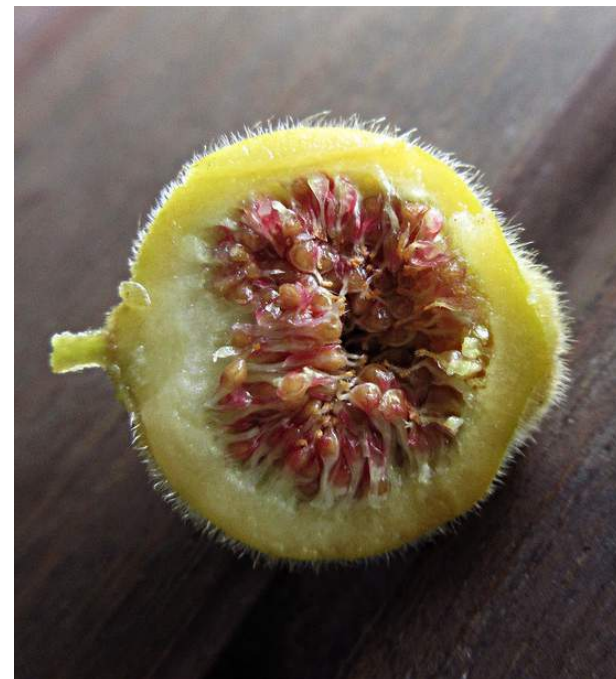
F. aurata



F. brunneoaurata



F. eumorpha



F. fulva



F. grossularioides



F. lepigarpa



F. melinocarpa

FIG ID

SHORT TREES EARTH FIGS



F. beccarii



F. malayana



F. megaleia



F. tarennifolia



F. treubii



F. uncinata

FIG ID

TREES WITH TRUNK FIGS



F. cereicarpa



F. fistulosa



F. francisi



F. racemosa

Monocious



F. rosulata



F. satterthwaitei



F. variegata

FIG ID

TALL TREES



F. callosa

Monoecious



F. nervosa

Monoecious

FIG ID

SHRUBS



F. cumingii



F. deltoidea



F. heteropleura



F. inaequipetiolata



F. midotis



F. oleifolia



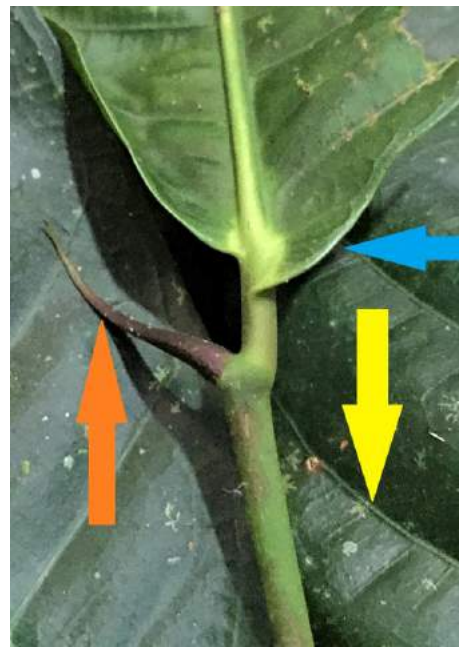
F. scaberrima



F. septica

FIG ID

SHRUBS



F. subulata

F. sinuata